





DESIGN
DETAILS





DNA

NEW RIVA FLYBRIDGE LINEAGE

BRAND NEW HULL DESIGN

WIDE BODY CONCEPT

STERN HIDDEN STAIRS (**PATENT PENDING**)

STERN GARAGE FOR 2 TOYS

NEW COCKPIT CONCEPT DESIGN

INFINITY DECK LINKS FLY AND BOW AREA

NEW RIVA INTERIOR DESIGN

DOUBLE MASTER CABIN

ENGINE CONFIGURATIONS 12V OR 16V

MAX SPEED UP TO 30 KNOTS

DIGITAL MANUAL

PRELIMINARY

LOA	m/ft	28,49 93'6"
LH	m/ft	23,98 78'8"
LWL	m/ft	23,10 75'9"
BEAM	m/ft	6,50 21'4"
DRAFT	m/ft	2,15 7'1"
LADEN DISPLACEMENT	t/lb	98 216053
UNLADEN DISPLACEMENT	t/lb	85 187393
FUEL TANK	l/us gal	8700 2298
FRESH WATER TANK	l/us gal	1320 349

ENGINE POWER	std	2 x MTU 12V 2000 M96L 1948
	opt	2 x MTU 16V 2000 M84 2218
	opt	2 x MTU 16V 2000 M96 2435
MAX SPEED	knots	26 28 30
CRUISING SPEED	knots	23 24 26

TOTAL GUEST BERTHS	8
GUEST CABIN	4
GUEST HEAD	4 +1 DAY
MASTER CABIN POSITION	MAIN DECK
FULL BEAM MASTER CABIN	YES
TOTAL CREW BERTHS	4
CREW CABIN	2
CREW HEADS	2
CAPTAIN CABIN	NO

MAIN FEATURES

HULL TYPE: WARPED HULL WITH SPRAY RAILS AND AFT DEADRISE 12°

H= OVERALL HEIGHT FROM KEEL 8,60 | 28'3"
 HT=MINIMUM TRANSPORT HEIGHT FROM KEEL 6,82 | 22'5"
 P= TRANSOM 4,51 | 14'10"

THE PERFORMANCE IS ESTIMATED AT THE FOLLOWING CONDITIONS: STANDARD VERSION DISPLACEMENT OF THE YACHT AT 1/3 LIQUID LOAD, CLEAN HULL, 25°C AIR TEMPERATURE GOOD WEATHER CONDITIONS, 6 PEOPLE ON BOARD. 88,48 t/lb. 195056

OVERLOADING THE YACHT BY:
 TOP SPEED DECREASES OF: 1,2 t/lb. 2646
 1 knot

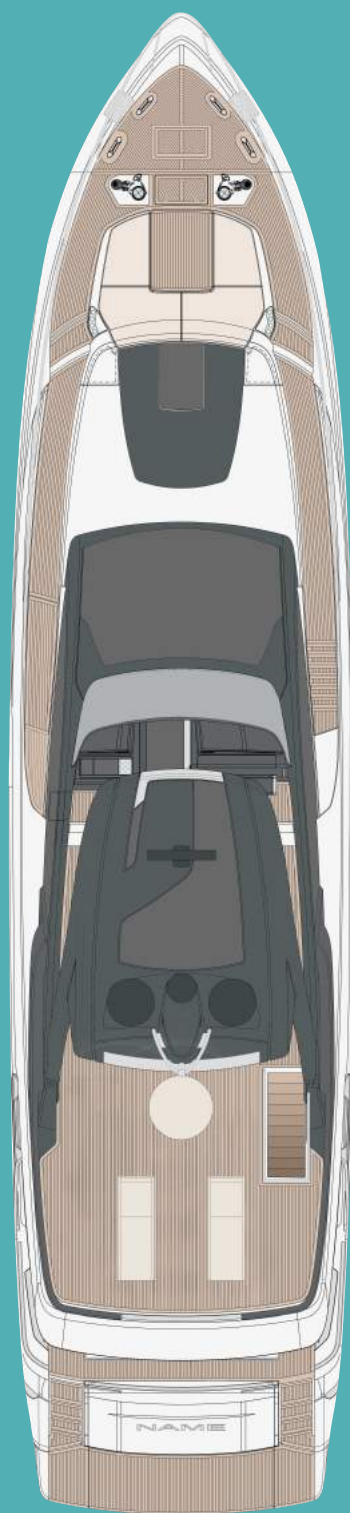
STABILIZATION: VECTOR FINS VF1300
 INTERCEPTOR HUMPHREE

SEA KEEPER OPT SEAKEEPER 16+9



PROFILE





HARDTOP



FLYBRIDGE

STD
GA



MAIN DECK



LOWER DECK



DIGITAL MANUAL

DIGITAL MANUAL

YES

Digital manual was developed by Ferretti Group engineering department. To help the crew to quickly understand the use of the yacht, perfectly replaced the old thick paper manuals. Riva 90' is among the first models that available the digital manual in the Riva range.

Easy to use



Search by picture



Search by content



Search by text



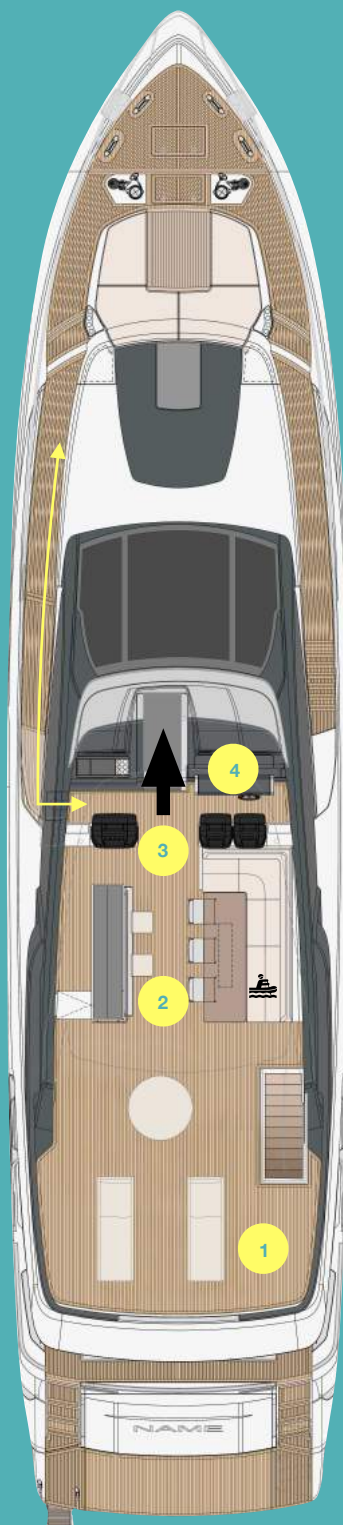
Tutorial video



Component manual



Favorites



FLYBRIDGE

FLYBRIDGE

46 m²

1. Flybridge aft

- Sufficient space for free standing furniture.

2. Flybridge central

- Wet bar on the port side;
- L shaped sofa with teak table on the starboard side as a real outside dining area;
- Storage under the sofa (included the life rafts);
- The whole area is covered by painted hard top (with skylight).

3. Flybridge forward

- Revolutionary concept,
- Access to the port side panoramic sidewalk;
- Links with bow area by sidewalk on wide body structure;
- RPH access.

4. Flybridge helm station

FLYBRIDGE HELM STATION

Flybridge helm station

- Hi-low dashboard;
- 2 separated pilot seats.



FLY HELM
STATION





FLYBRIDGE
STORAGE

FLYBRIDGE STORAGE 2490 L



250 L



250 L - 750 L



750 L +

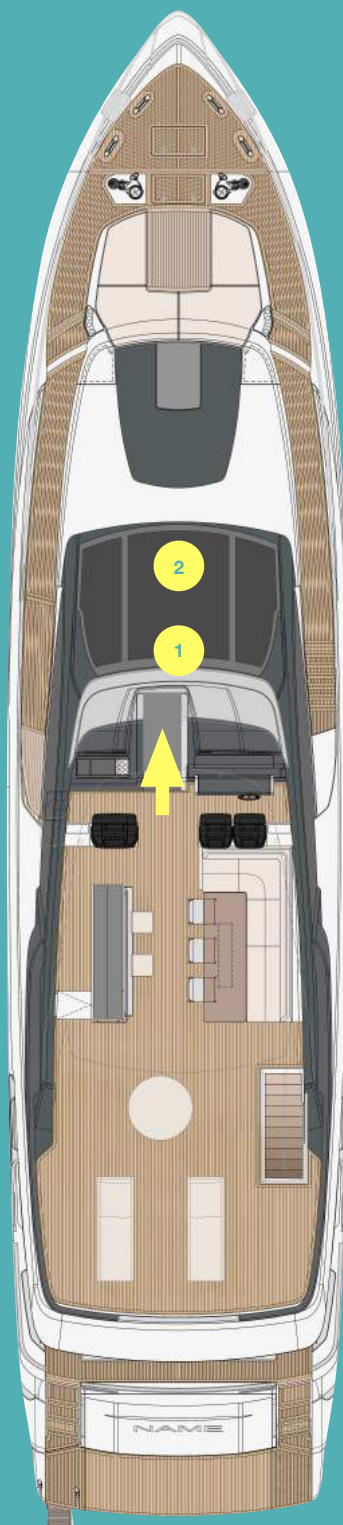


LIFE RAFT



FLYBRIDGE





RPH

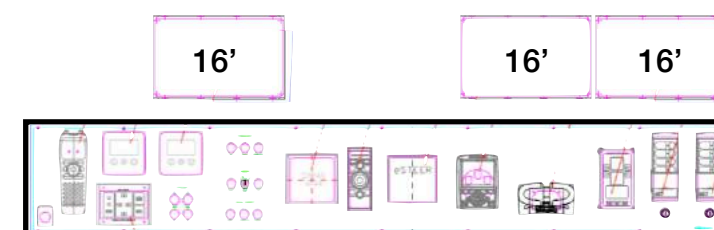
RPH

3 m²

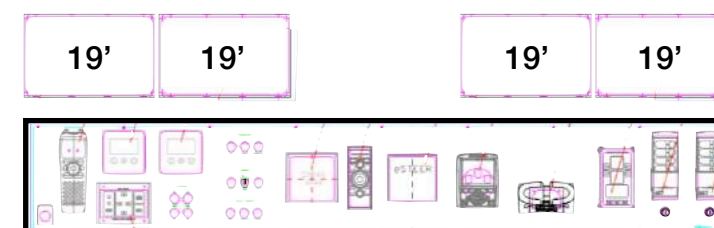
1. RPH access from flybridge forward or main deck lobby.

2. Helm station NAVIOP + SIMRAD.

- Integrated means safety and optimized management. One single intuitive and easy to use HMI (Human Machine Interface) that can be customised and adopted in every situation.
- The "Multicontrol system" allows full control of the different devices (radar, plotter, autopilot, engines, fuel level, pumps, lights, etc) through a single device with one logic and interface. Perfect balance between electronic, aesthetic and ergonomic aspects simplifies the management of the ship's navigation and control system and increases security levels. High level of versatility, thanks to a custom layout in line with the style of the yacht.
- STD version with 16' screen x 3



- OPT version with 19' screen x 4





RPH





STERN +
COCKPIT

COCKPIT + WALKWAYS PLATFORM

32 m²

6 m²

1. Electro hydraulic platform

- Easy toys launch.

2. Hidden stairs (**PATENT PENDING**)

- Starboard side will appear when the platform lowers in water;
- Can be reached the cockpit directly without the steel ladder.

3. Cockpit

- Covered mooring station;
- Hi-low teak table can be transformed into sun pad with bench sofa;
- Vertical adjustable bench sofa "↔";
- Glass aft railing;
- Fly stairs integrated into the superstructure.



4. Walkway

- Darkening glass wings;
- Floating terrace as OPT on each side.
- Engine room access "✂"



COCKPIT
STORAGE

COCKPIT STORAGE

3200 L

AFT GARAGE

10000 L



250 L



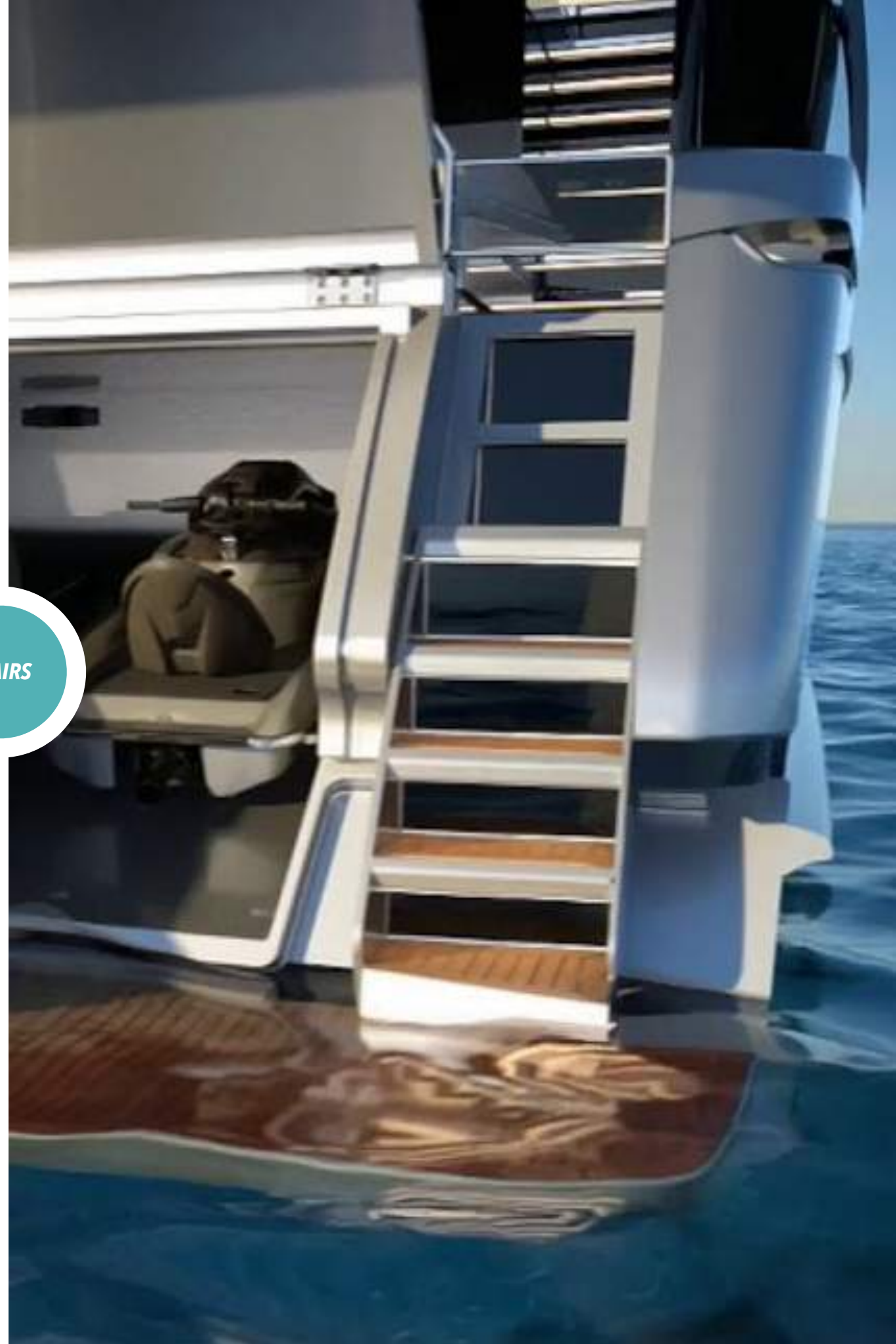
250 L - 750 L



750 L +



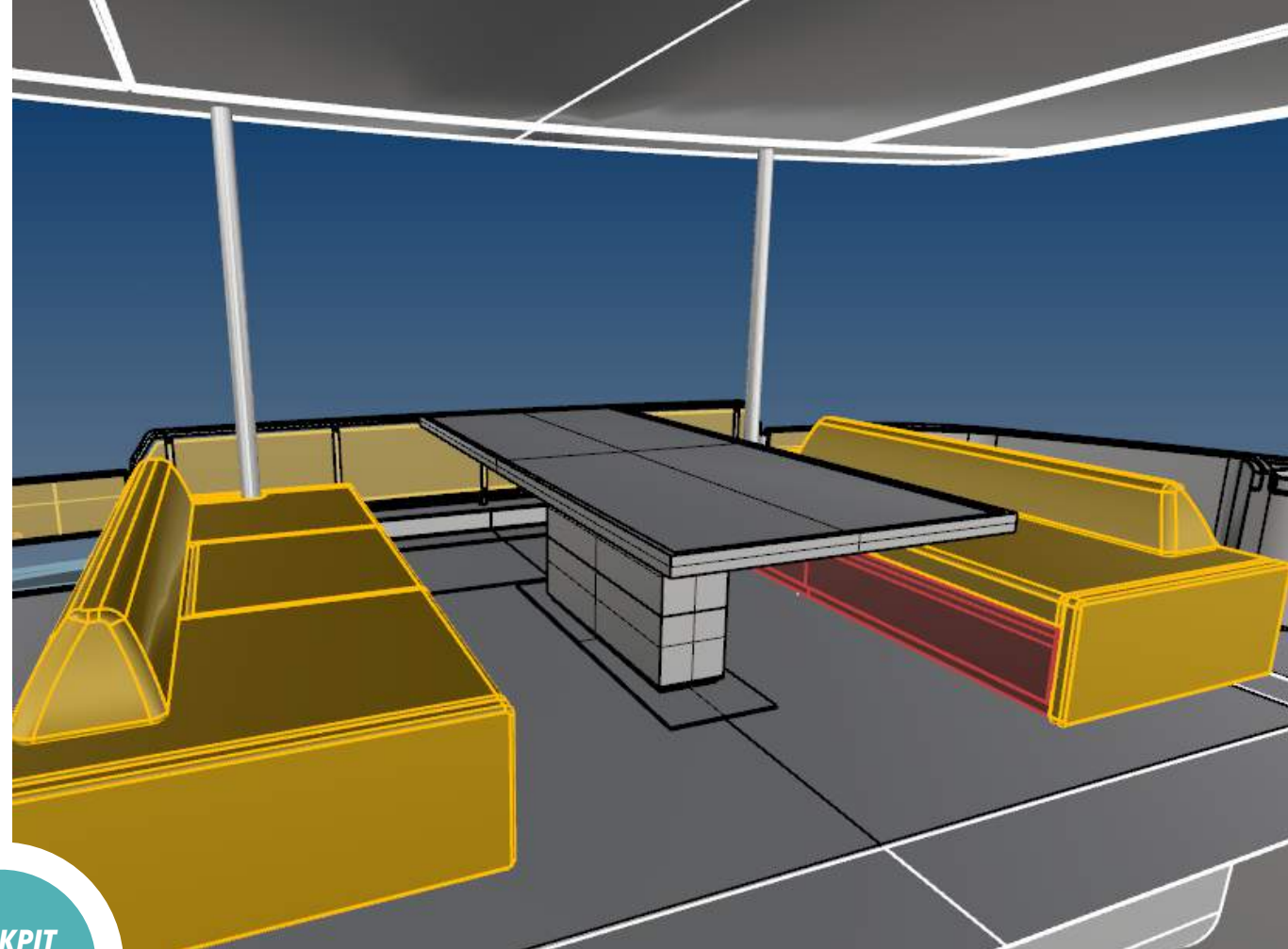
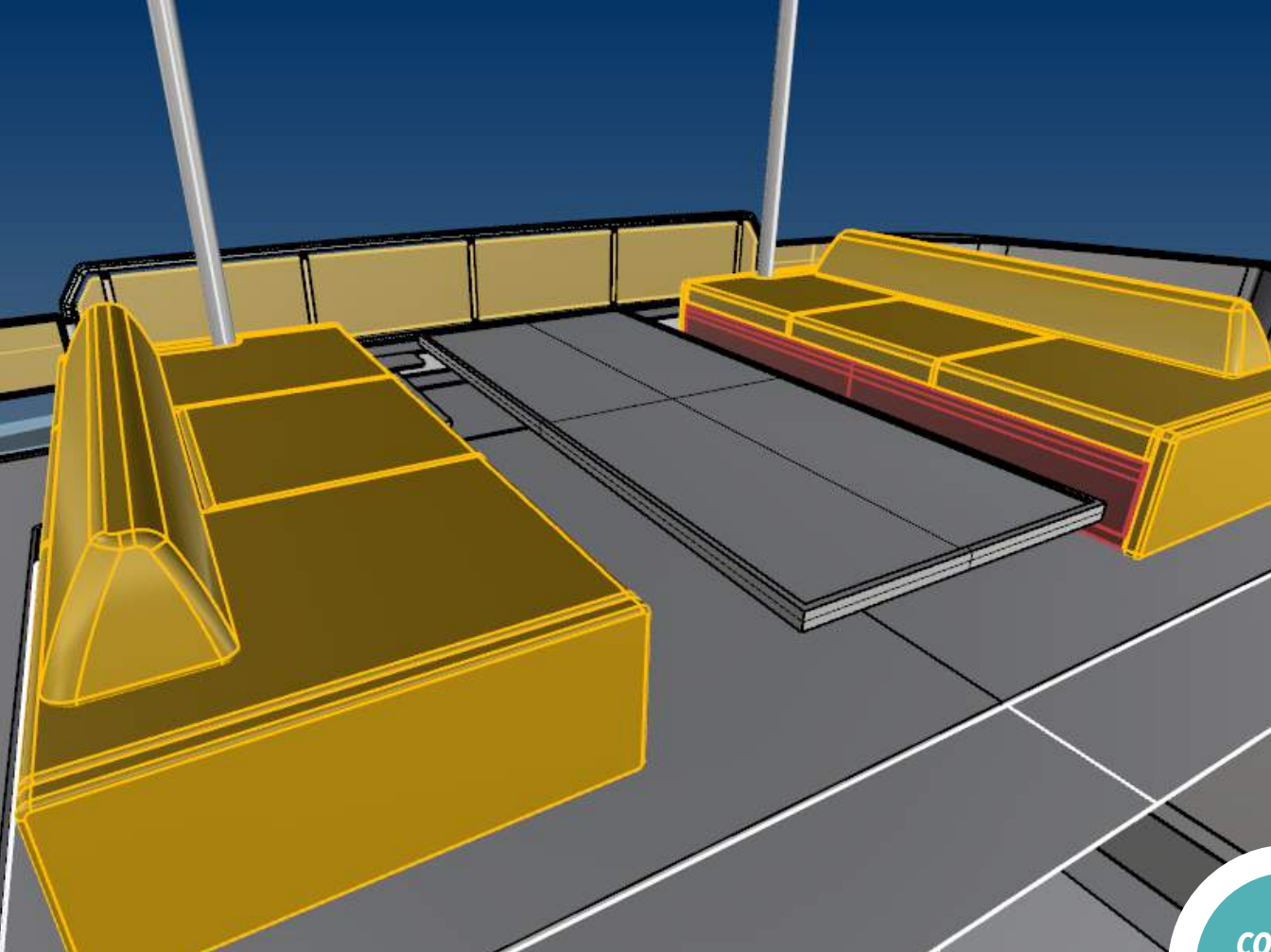
STAIRS



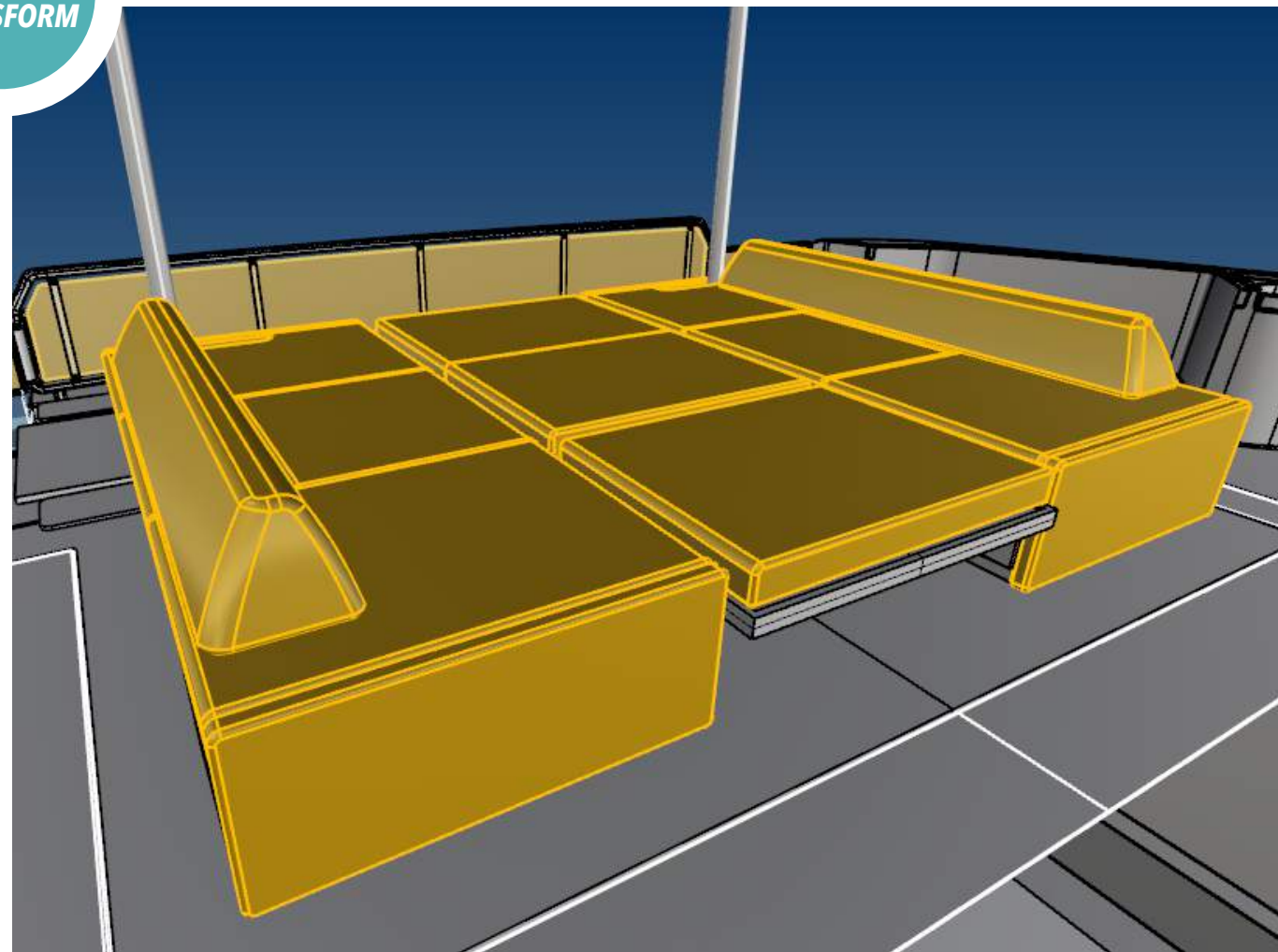
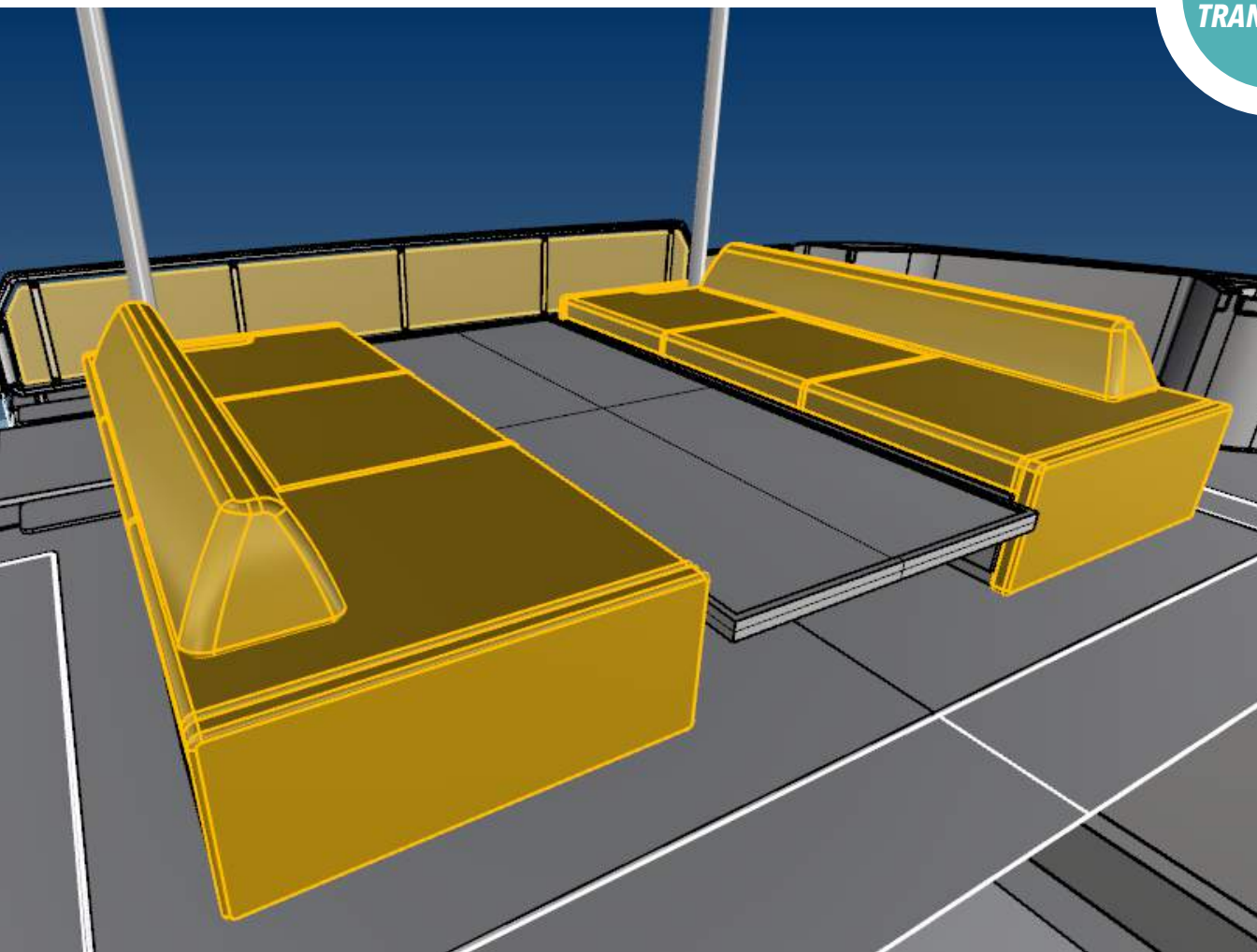


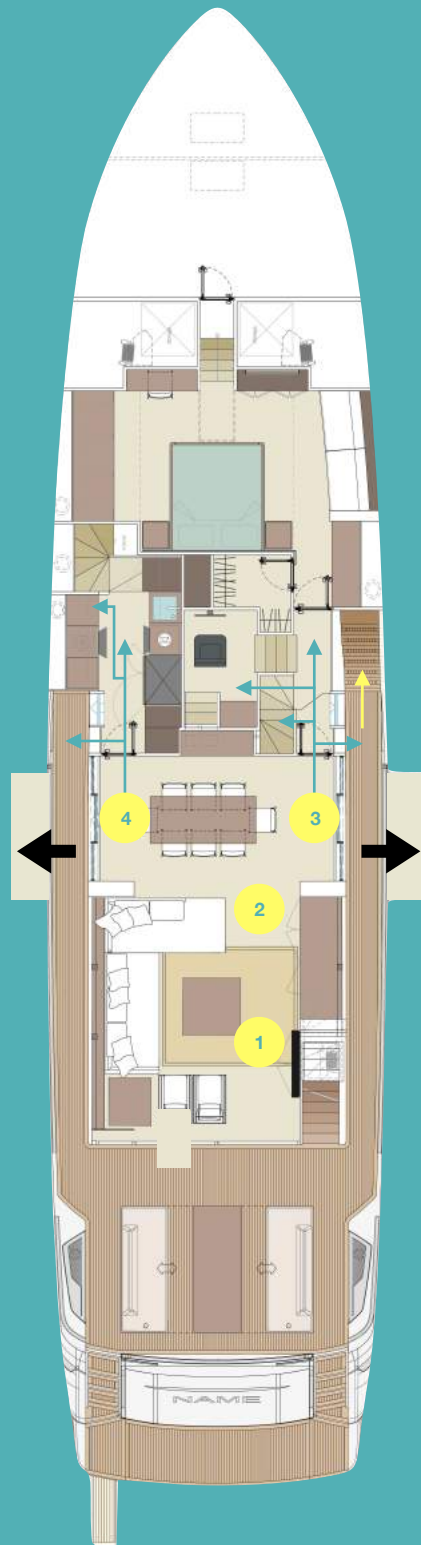
COCKPIT





COCKPIT
TRANSFORM





MAIN DECK
INTERIOR

MAIN SALON GALLEY

31 m²
7 m²

1. Living area

- Riva exclusive interior design concept;
- Full height saloon door;
- Mirror TV & hidden drawer bar

2. Dining area

- Long table for 8;
- Full height side saloon door as OPT on each side,
- Floating terrace as OPT on each side.

3. Guests area access

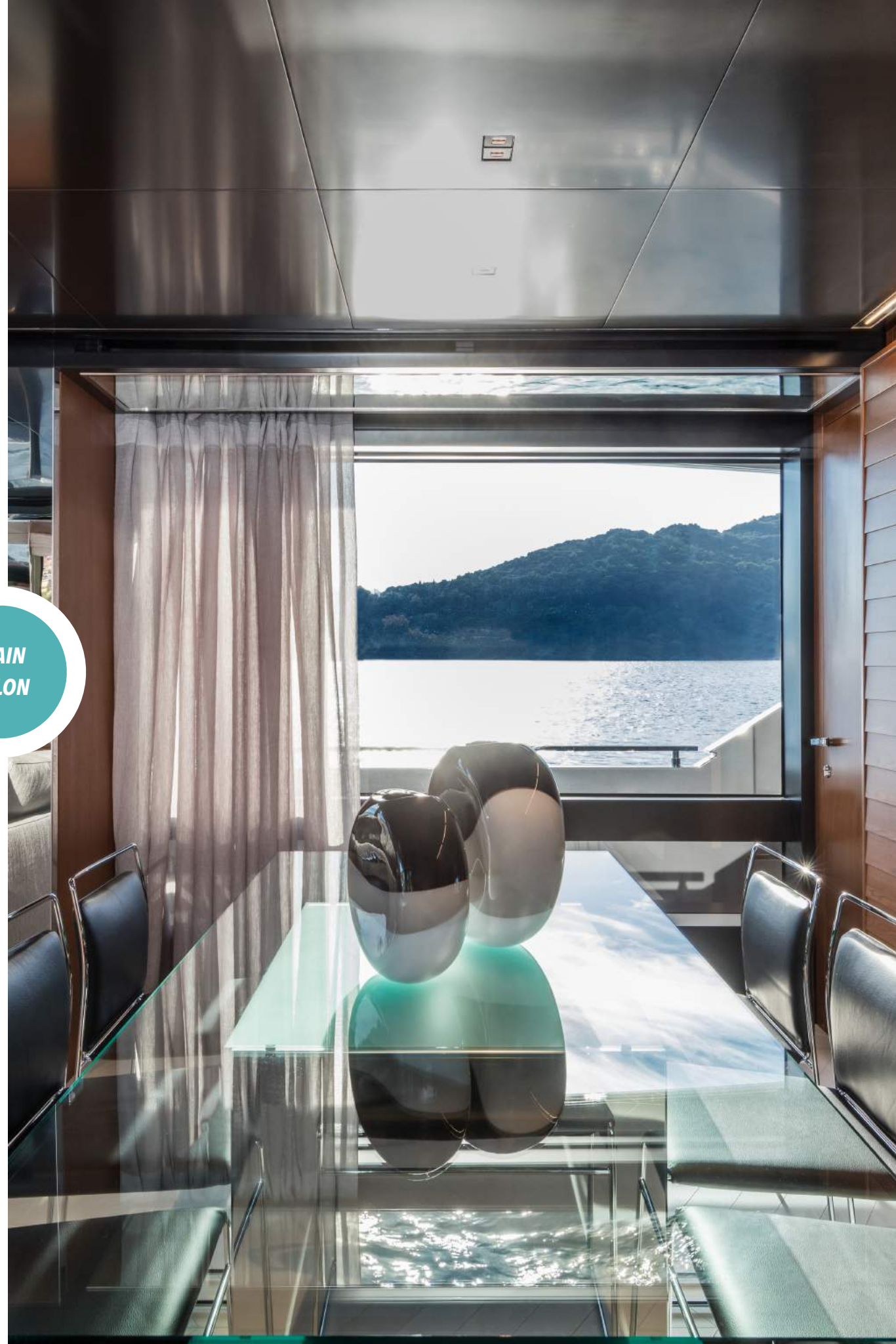
- Can be reached the master cabin, lower deck guests cabin and RPH.
- The whole area is separated from the service area;
- A side exit in the lobby can be directly reached the bow area.

4. Service area access

- Can be reached the 7 m² galley (a side exit on the port side);
- Through the galley can be reached the lower deck crew area.



MAIN
SALON





MAIN CABIN MASTER HEAD

20 m²

7 m²

1. Master cabin

- Full beam cabin thanks to the wide body hull;
- Queen size bed (2040 x 1780mm);
- Walk-in wardrobe;
- Storage furnitures in each side "🗑️";
- Vanity desk;
- Skylight "☀️"

2. Master head

- Master head on the lower deck thanks to the Split-level style.

MASTER
CABIN



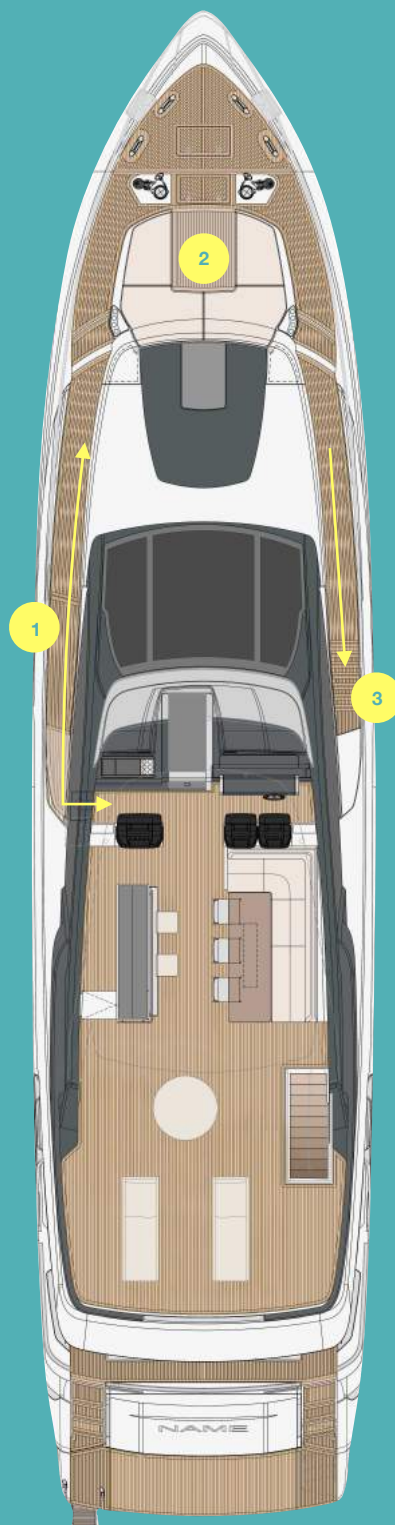
MASTER
CABIN





MASTER
HEAD





*BOW
AREA*

BOW AREA

18 m²

1. Fly-Bow connection

- Port side panoramic sidewalk;
- Flybridge and bow is connected by walkways on wide body structure.

2. Sun pad

- Sofa with backrest;
- Hi-low foldable teak table in the middle, can be hide and transform the whole area into a sun pad;
- Bottle/glass holder on each side.

3. Main deck access



**BOW AREA
STORAGE**

BOW AREA STORAGE 17260 L



250 L



250 L - 750 L

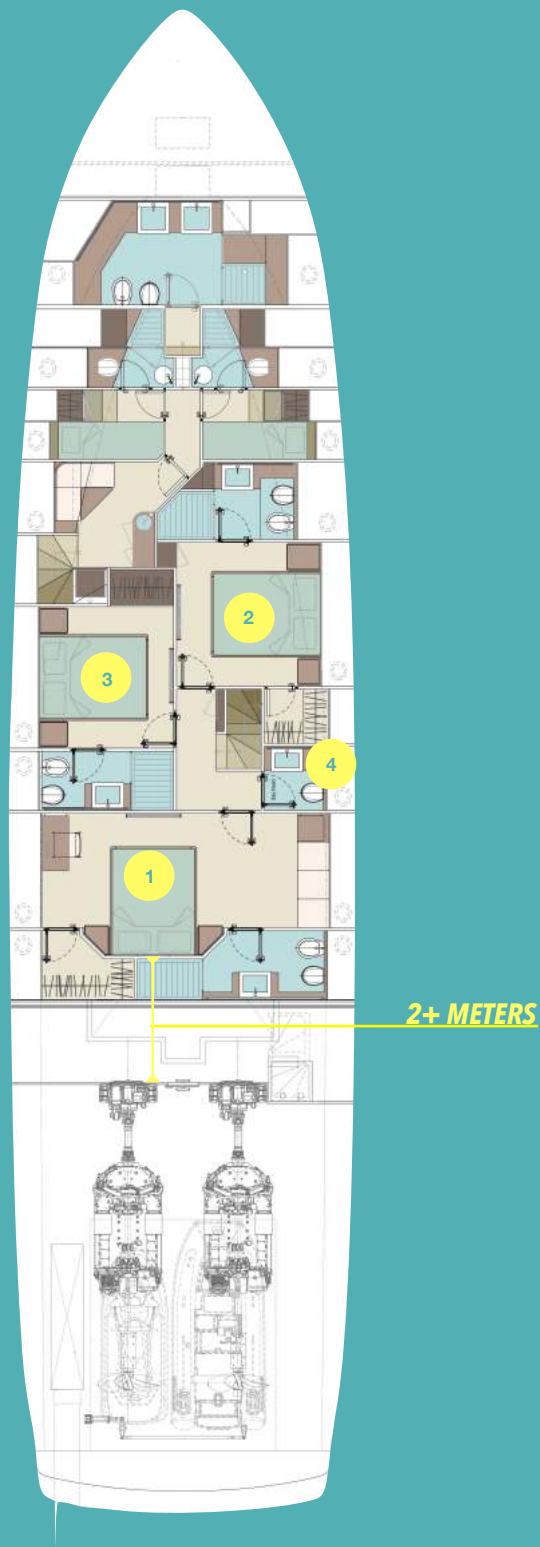


750 L +



**BOW
AREA**





LOWER
DECK

GUESTS AREA

41 m²

ALL CABINS HAVE RECTANGULAR HULL WINDOWS & INTEGRATED PORTHOLES

1. Additional master cabin 18 m²

- lower deck centre area;
- Walk-in wardrobe and vip head act as additional sound insulation;
- Over 2m between the engine room and the bed;
- In the **OPT** layout this cabin becomes a 2nd private salon.

2. Starboard side VIP cabin 12 m²

- Double bed and walk-in wardrobe;
- VIP head next to the crew mess acts as additional sound insulation.

3. Port side guest cabin 10 m²

- Double bed and en suite private head.

4. Day head



GUESTS
AREA





CREW
AREA

CREW AREA GARAGE

14 m²

15 m²

1. Crew area

- Access from the main deck galley;
- Crew mess with L shaped sofa and teak table, crew kitchen;
- Double crew cabin with pullman bed and private head;
- Total 2 crew cabin, 4 crew berths.

2. Aft garage

- Electro hydraulic platform;
- 1 Williams SportJet395
- 1 JETSKI SeaDoo RXT X300.





GARAGE





MAIN SQM
OVERVIEW

EXTERIOR		
DECK	AREA	RIVA 90'
FLYBRIDGE	EXTERNAL	46
UPPER DECK	BOW LIVING AREA	18
MAIN DECK	COCKPIT+WALKWAYS	32
LOWER DECK	SEPARATED PLATFORM	6

INTERIOR		
DECK	AREA	RIVA 90'
UPPER DECK	RPH	3
MAIN DECK	MAIN SALON	31
MAIN DECK	GALLEY	7
MAIN DECK	MASTER CABIN	20
LOWER DECK	MASTER HEAD	7
LOWER DECK	CREW AREA	14
LOWER DECK	AFT GARAGE	15
LOWER DECK	GUEST CABINS + HEADS	41

TOTAL BY AREA / DECK		
DECK	AREA	RIVA 90'
LOWER DECK	INTERIOR	77
LOWER DECK	EXTERIOR	6
MAIN DECK	INTERIOR	58
MAIN DECK	EXTERIOR	32
UPPER DECK	EXTERIOR	18
UPPER DECK	INTERIOR	3
FLYBRIDGE	EXTERIOR	46

TOTAL SMQ		
DECK	AREA	RIVA 90'
TOTAL	INTERIOR	138
TOTAL	EXTERIOR	102



Riva

A FERRETTI GROUP BRAND